

IRIS INSTRUMENTS

Electre Pro Software

The **ELECTRE Pro** software is a program allowing to create some 2D-3D-surface/boreholes sequences of measurement for *IRIS Instruments* SYSCAL Pro / ELREC Pro Switch and SYSCAL Jr/R1+ Switch (2 Channels) resistivity-meters.

Minimum recommended PC configuration:

- Windows® XP
- 1 GHZ Microprocessor
- RAM memory: greater than 1 Gb
- 1280 x 1024 resolution screen

The upload of the sequence into the unit is done by a serial link RS-232 cable or by a USB link.

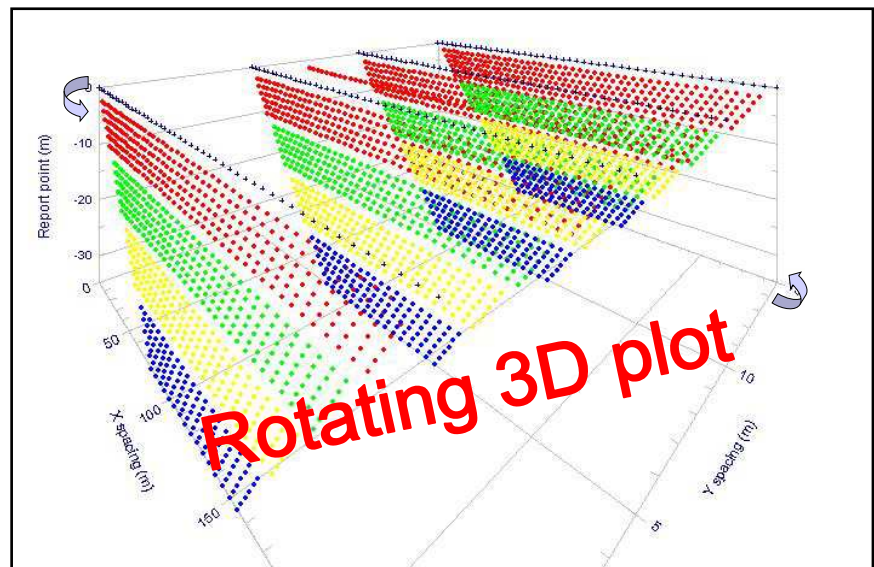
The **ELECTRE Pro** software allows to create automatically (accounting an estimated maximum investigation depth, user specified) or manually, some sequences of measurements with many possibilities:

- Use of any type of standard electrode arrays (dipole-dipole, reciprocal Schlumberger-Wenner, pole-dipole forward & reverse, cross diagonal pole-pole ...)
- Definition of the levels of investigation with the possibility of multi-spacing configuration for data quality improvement
- Optimization of sequences for higher acquisition speed (the optimization process can add some measurements (gapfiller quadripoles) that can be rejected after acquisition (by the PROSYS II *IRIS Instruments* software)).

The **ELECTRE Pro** software allows also to import any type of sequences, manually created in "txt" file, in case of specific applications.

A graphical picturing of the created sequence(s) is done so as to visualize the distribution of the data points that will be measured.

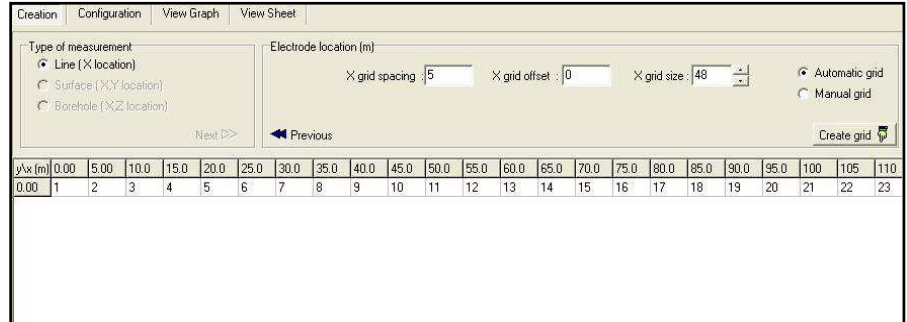
Animation can also be run so as to visualize the successive quadripoles of measurement of the created sequence.



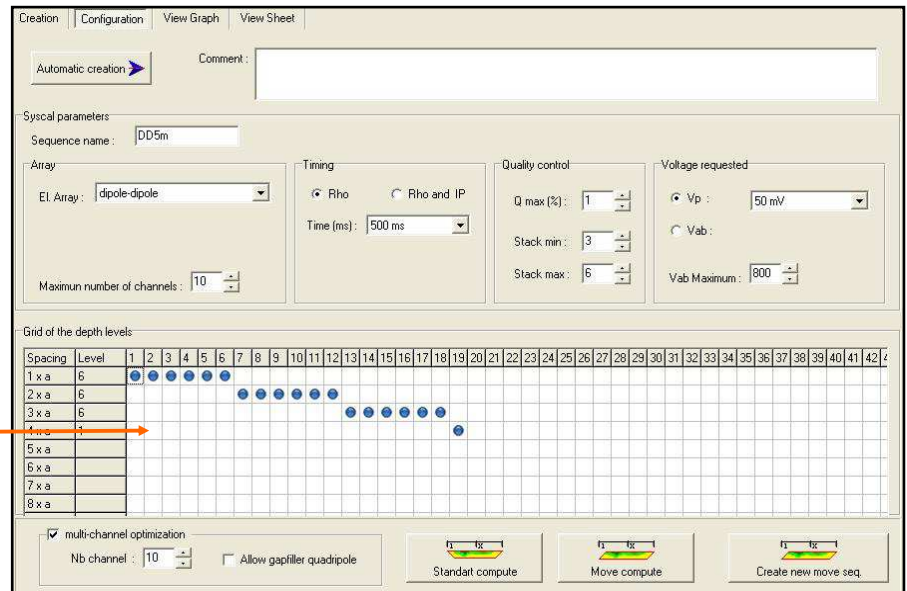
Electre Pro Software

The creation of a sequence is made in 3 steps:

- Creation of the grid ("Creation" tab) depending on:
 - organization of the electrodes (line/surface/borehole)
 - number of electrodes
 - positions of the electrodes



- Definition of the parameters of the sequence ("Configuration" tab):
 - timing / quality control
 - electrode array
 - levels of investigation

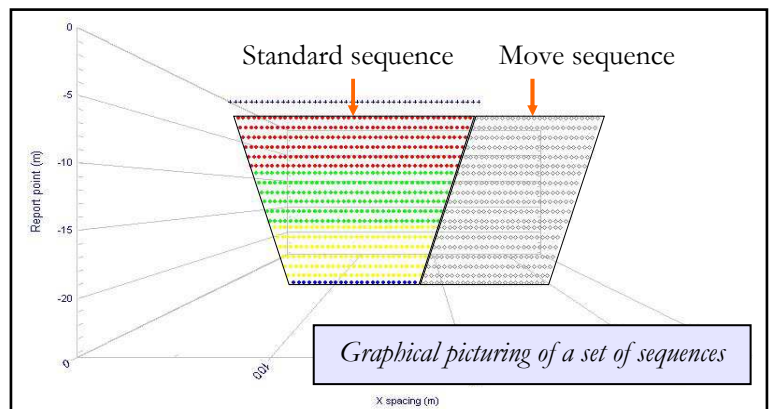


The different spacings and the number of depth levels is defined graphically

- Creation of the *Standard* sequence, or a *Move* sequence (defining the number of electrodes to be shifted) in case of long profiles acquisition.

The sequence(s) can be then visualized graphically ("View Graph" tab) or numerically ("View sheet" tab).

The duration that will be necessary to carry out the measurement in the field is also displayed.



Specifications subject to change without notice BR_ELP_GB_V1

